

AeroGarden® | **Quick Setup Guide**

Welcome to the World of In-Home Gardening!
Simple Steps to Get Your AeroGarden Up and Growing (No Tools Required)



SPROUT

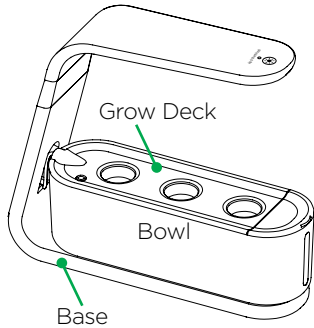
100306-BLK/WHT/RED/BLU/CGY

Garden Input: 12Vdc, 2.5A • Adapter Input: 100-240Vac, 50/60Hz • Adapter Output: 12Vdc, 2.5A

Get Growing in 4 Fast & Easy Steps!

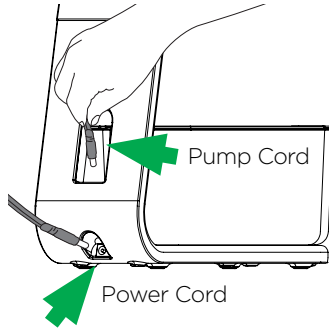
1

Make sure that Bowl is securely seated in Base and that Grow Deck is properly aligned on Bowl.



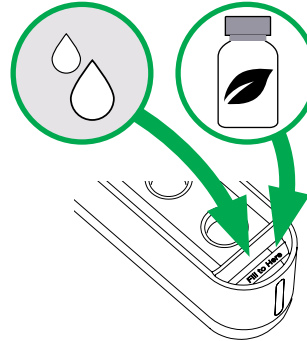
2

Make sure that Pump Cord is plugged into the connector at the back of the base. Plug in the Power Cord Adapter.



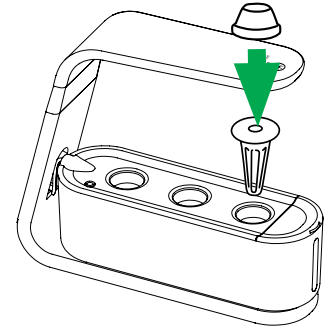
3

Add Water to 'Fill To Here'. Add Plant Food directly to Bowl as per instructions.



4

Place Seed Pods in openings on the Grow Deck. Cover Seed Pods loosely with Grow Domes.



What's Inside



Garden with LED Grow Lights



Power Cord Adapter



Grow Domes



Seed Pods

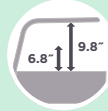


Plant Food

Good To Know



65-76°F / 16-24°C
Ideal Temperature



Min / Max
Height



Keep Seed Pod
Labels On



After
Sprouting

What You Need



Just Add
Water

Helpful Garden Tips



Light Height

Keep the Grow Light 4-6" over the plants.

Your plants love all the light they can get.

When growing different types of plants together in one AeroGarden, expect different growth patterns, shapes & sizes.

Basil is a classic example of a plant that sprouts within days and grows tall very quickly. If the Grow Light is raised just for the Basil, it will take over and the other plants will not thrive. When it comes to Basil, remember to prune early and often.



Different Grow Rates

Seeds seem to have a mind of their own.

While some sprout in a few days, others may take up to a month. Some plants grow fast, some grow slow, some grow tall, some short. Even the same variety of plants can grow differently. Each is unique!



Plants Per Pod

With herbs, lettuce and flowers, let as many sprouts grow per pod as you like. This will lead to bigger harvests down the road.

However, tomatoes and peppers grow best with just one plant per pod. With shears, carefully cut out smaller seedlings, leaving one healthy plant per pod.



Grow Domes

Remove the Grow Domes before seedlings begin touching the dome. At that point, their job is done. Recycle or save for later.



Water Quality Matters

Municipal tap water works well in most areas, but if you have really hard water or softened water, consider mixing bottled distilled water (50-50 at first) with your tap water for best results.



Add Fresh Water Often

As plants mature they start to use more water. For best growth, keep water level topped off. You don't need to wait for the Add Water Alert. A full water bowl is always better than empty.



Be Brave. Prune!

Pruning does not hurt your plants, it helps them. Pruning brings greater health and encourages dense, compact growth for bigger yields.

Never prune more than 1/3 of your plant. Pruning roots is not recommended.



Rinse & Refill

Rinse and refill your Water Bowl monthly with fresh cool water (every other time you add Plant Food). Empty the Water Bowl, refill with fresh cool water, and add recommended Plant Food.

For more tips on plants and pruning go to www.AeroGarden.com

Garden Settings



Plant Food

Add Liquid Plant Food to the Bowl when you first plant your Seed Pod Kit and when the 'Add Plant Food' reminder starts to flash at you every 2 weeks.

Follow directions on the Plant Food bottle for feeding amounts and top off the water level to the 'Fill To Here' line.

Lightly touch and hold the 'Light On/Off' button at the top of your LED light for a couple of seconds to turn the alert off and to reset the Plant Food Timer.

Nurtured by 

Just a gentle touch works!

ADD PLANT FOOD



Lights

Touch the 'Light On/Off' button to temporarily turn LED Grow Lights ON or OFF. This will not affect the timing of your light cycle and occasional use will not harm your plants.

Once touched, the Light will stay ON/OFF until the next time you are set to go ON/OFF.

Set Lights 'ON' Time

When you plug in your AeroGarden for the first time the Grow Light will come ON, and will continue to come ON at this time every day. It will turn Off automatically 15 hours later.

If you would like to change the time of day when the Light comes ON, follow these steps:

Gently Touch and hold your finger over the 'Light On/Off' button for about 5 seconds and release when the small light (Add Plant Food alert) blinks once.

Your Grow Light will now come ON at this time each day and will stay ON for 15 hours.

An Important Note About Light:

Your AeroGarden Sprout has a built-in timer for the Grow Light that automatically provides your plants with the perfect amount of "sunlight." As long as your plants get this amount of light, it does not matter what time the lights are Off. You may find it most convenient to have the Light go on in the morning and off at night, to match your own personal wake and sleep schedule.

Watering

Plants grown in the AeroGarden are designed to thrive with most municipal tap water. If your water is especially hard, improved results can be seen with distilled water or reverse osmosis water, but this is not needed in most cases.

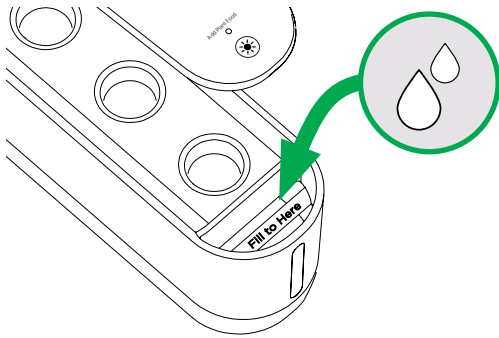
It's okay to add water to the 'Fill To Here' line any time. For best growth, keep your garden topped up!

Good To Know:

Your pump will be ON when your Grow Light is ON, and it will be OFF, when your Grow Light is OFF.

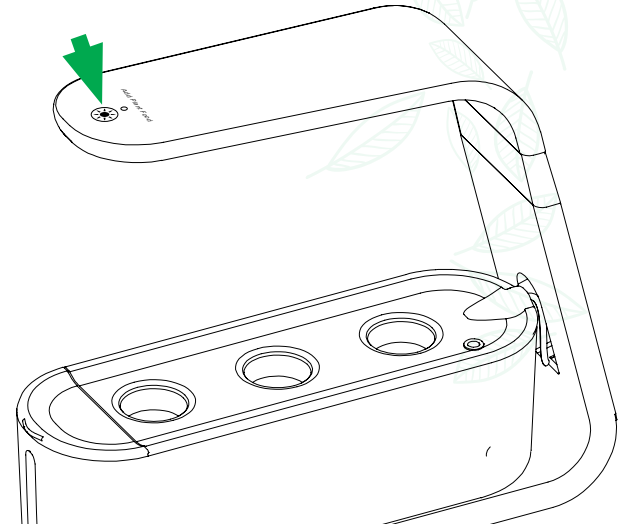
An Important Note About Watering:

Your AeroGarden has a Low Water shut off feature. If your reservoir runs empty, your pump will stop and your LED Grow Light will turn OFF. This will alert you that your AeroGarden needs water, and will help slow down your plants water intake needs for a short while. After you fill your reservoir with water, your LED Grow Light will turn back ON and continue its Light ON cycle.



To Start a New Garden

When your 'Add Plant Food' alert is OFF, gently touch and hold your finger over the 'Light On/Off' button for about 10 seconds. The 'Add Plant Food' alert light will blink 3 times to confirm your AeroGarden has been reset. All of your timers will be reset to start at this point and you will be ready to plant again.





LIMITED WARRANTY

WHAT IS COVERED – This warranty covers any defects in materials or workmanship, with the exceptions stated below.

HOW LONG COVERAGE LASTS – This warranty runs for one (1) year on this AeroGarden and LED Grow Lights, from the date of original purchase, for the original purchaser/user.

WHAT IS NOT COVERED – The warranty shall not apply to problems arising from: normal wear; failure to adhere to enclosed operating instructions; serial numbered products if the serial number has been removed or defaced; products subject to negligence, accident, improper use, maintenance or storage; products damaged by circumstances beyond AeroGrow International Inc.'s control; loss or damage to removable parts; or products modified (including, but not limited to, modifications through the use of unauthorized parts or attachments) or repaired by anyone other than AeroGrow International, Inc., or its designee. This warranty excludes all incidental or consequential damages.

WHAT AEROGROW WILL DO – AeroGrow International, Inc., at its option, will repair any defects in materials or workmanship or will replace these products with ones of similar features and price. AeroGrow International, Inc.'s sole obligation and your exclusive remedy under this warranty shall be limited to such repair or replacement.

TO RETURN THIS PRODUCT – If you have questions or concerns regarding your AeroGarden, please contact Customer Service at 1-800-476-9669. Please do not return any product without contacting AeroGrow for return authorization. Unauthorized returns, as well as C.O.D. shipments, will be refused. For more information regarding returns, please see the Returns section at www.AeroGarden.com

Due to continuing improvements, actual product may differ slightly from the product described herein. Some states do not allow the exclusion or limitation of incidental or consequential damages, so the above limitation or exclusion may not apply to you. This warranty gives you specific legal rights, and you may have other legal rights that vary from state to state.

For more detailed information about growing in your AeroGarden, please visit: www.aerogardensupport.com

1-800-476-9669 USA | 1-800-611-9058 - CANADA

www.aerogarden.com/contact-support

NEED SUPPLIES, ACCESSORIES OR INFORMATION? Call: 1-800-476-9669 or Visit Our Website: www.AeroGarden.com



We also have an active Facebook Community that loves to answer questions at facebook.com/aerogarden. "Like" us for special offers and community fun!

AeroGrow International, Inc., P.O. Box 18450, Boulder, CO 80308-1450

©2020 AeroGrow International, Inc. 061020 AC

IMPORTANT SAFETY INSTRUCTIONS

When using this AeroGarden electrical furnishing, basic precautions should always be followed, including the following:

Read all instructions before using this AeroGarden furnishing. SAVE THESE INSTRUCTIONS

1. To reduce the risk of electric shock, the AeroGarden has a specific plug. Do not change the plug in any way.
DANGER – to reduce risk of electric shock:
2. Always unplug the AeroGarden from electrical outlet before cleaning.
WARNING – to reduce risk of burns, fire, electric shock, or injury to persons:
3. Unplug AeroGarden from outlet before putting on or taking off parts.
4. Please take proper precautions when operating an AeroGarden near or by individuals requiring close supervision, including children.
5. Use AeroGarden only for its intended use as described in the instructions.
Do not use attachments not recommended by manufacturer.
6. Never operate AeroGarden if it has a damaged cord or plug, if it is not working properly, if it has been dropped and damaged, or if it has been dropped in water. If any of these conditions occur/exist, contact www.AeroGardenSupport.com or your country's local distributor for instructions.
7. Keep cord away from heated surfaces.
8. Never operate furnishing with air openings blocked. Keep air openings free of lint, hair, and the like.
9. Never drop or insert any object into any electrical openings.
10. Do not use outdoors.
11. Do not operate where aerosol (spray) products are being used or where oxygen is being administered.
12. Do not touch moving parts or hot parts such as pumps, lights, reflective surfaces, and the like.
13. To disconnect, remove plug from outlet.
14. Do not place or submerge base, cord, plug, or Light Hood in water or other liquid to clean it.
15. Do not allow water to contact hot LED Grow Lights.
16. Use only approved and supplied parts and accessories. Use only AeroGarden LED Grow Lights with this AeroGarden model. Use of any other kind of accessory is not recommended. Replacement parts can be ordered from www.AeroGarden.com
17. Do not use AeroGarden for other than intended purpose.
18. This product is intended for household and residential use only. This product is not approved for commercial applications.
19. If supply cord is damaged, it must be replaced by manufacturer, its service agent, or similarly qualified technician in order to avoid a hazard.
20. Electrical wiring must be in accordance with local regulations.
21. This appliance is not intended for use by persons (including children) with reduced physical, sensory or mental capabilities, or lack of experience and knowledge, unless they have been given supervision or instruction concerning use of appliance by a person responsible for their safety.
22. Children should be supervised to ensure they do not play with the appliance.

Warning: Changes or modifications to this unit not expressly approved by the party responsible for compliance could void the user's authority to operate the equipment.

Note: This equipment has been tested and found to comply with the limits for a Class B digital device, pursuant to Part 15 of the FCC Rules. These limits are designed to provide reasonable protection against harmful interference in a residential installation. This equipment generates, uses and can radiate radio frequency energy and, if not installed and used in accordance with the instructions, may cause harmful interference to radio communications. However, there is no guarantee that interference will not occur in a particular installation. If this equipment does cause harmful interference to radio or television reception, which can be determined by turning the equipment off and on, the user is encouraged to try to correct the interference by one or more of the following measures:

- Reorient or relocate the receiving antenna.
- Connect the equipment into an outlet on a circuit different from that to which the receiver is connected.
- Increase the separation between the equipment and receiver.
- Consult the dealer or an experienced radio/TV technician for help.

This device complies with Part 15 of the FCC Rules. Operation is subject to the following two conditions: (1) this device may not cause harmful interference, and (2) this device must accept any interference received, including interference that may cause undesired operation.

U.S. CAUTION - You are cautioned that any changes or modifications not expressly approved in this manual could void your authority to operate this equipment.

User Maintenance: Any servicing is to be performed by an authorized service representative. Use original packaging for storage when the appliance is not used.

Disconnect power before servicing or replacing lights. Use only AeroGarden LED Light replacement.

DO NOT SUBMERGE

**HOUSEHOLD USE ONLY
POUR L'USAGE À LA MAISON**

Do not immerse cord in water or other liquid, and unplug cord from outlet when not in use.